

Power Drain Trap – Stainless type

Power Drain Trap

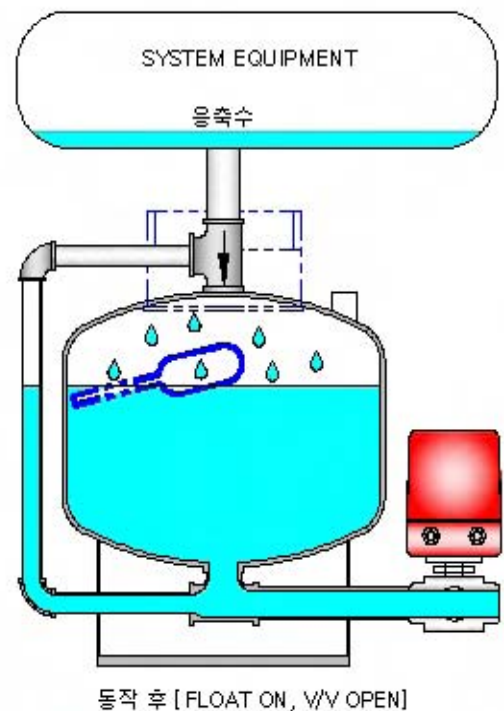
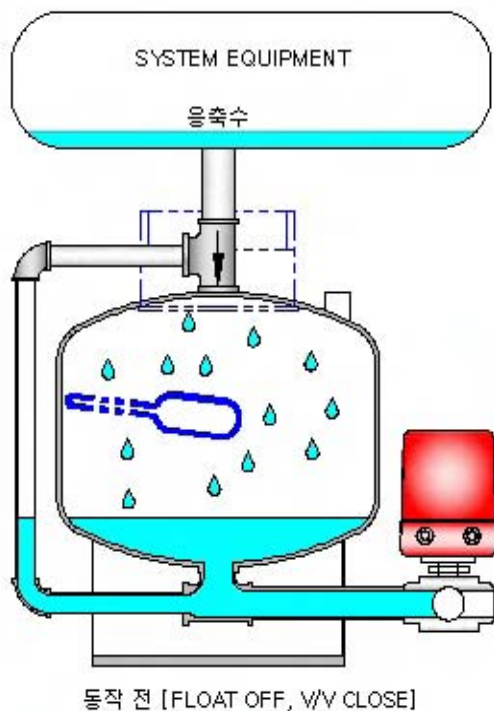
[WRET – 5000]

Advantages

- Bigger size outlet valve (25A BALL VALVE)
- High reliable working
- Manual discharge is available
- No loss of compressed air (Zero Loss)
- Optimum determination of float location
- Easy maintenance
- Visible working status(sight glass).
- Higher capacity of condensed water
- A heater for antifreezing is available
- Stainless Feature

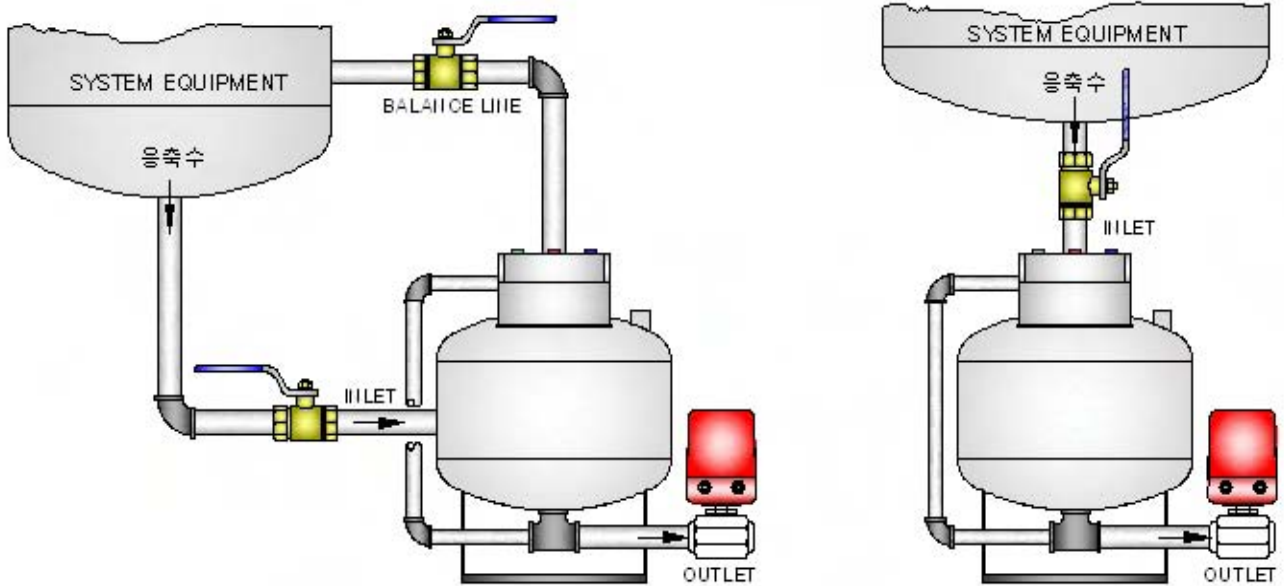


Operating Principle & Structure



WRET-5000 Installation / Specifications

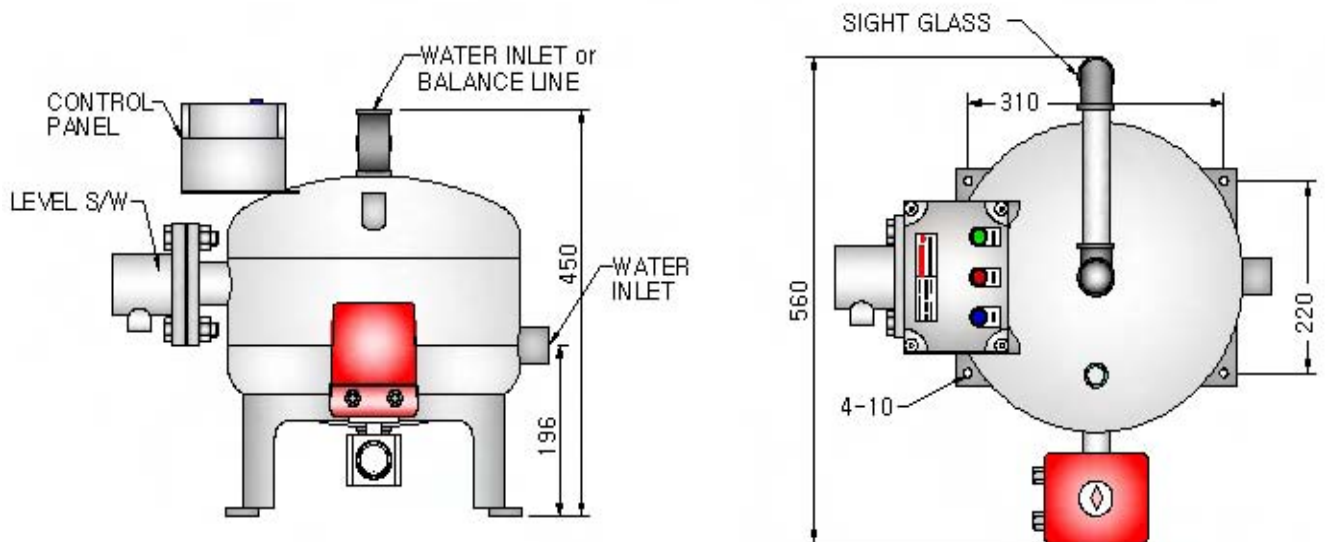
1. Installation



Ex.1) : In the case of Balance Line

Ex.2) : In the case without Balance Line

2. Dimension & Spec.



SPECIFICATIONS				
Working Temp.	2 ~ 70	°C	Power source	220V 1PH 60 Hz
Working Pressure	0 ~ 10	kgf/cm ²	Inlet connection	1"(25A) 2 point
Capacity (Max)	2.8 ~ 9.9	kgf/cm ²	Outlet connection	1"(25A) ball V/V
Air compressor	3000	HP	V/V off delay time	Free Setting Available

** The optimum working is one time per 5~15minute.