

Power Drain Trap – Motorized Ball Valve

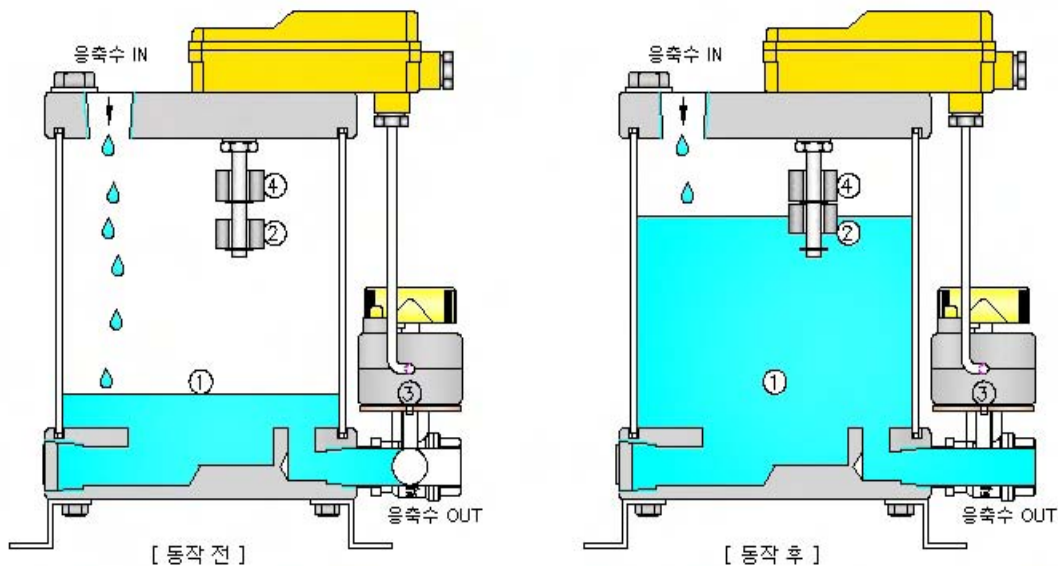
POWER DRAIN TRAP [WRET – 1500, 3000]

ADVANTAGES



- Bigger size outlet valve (15A BALL VALVE)
- High reliable working
- Manual discharge is available
- No loss of compressed air
- Built-in counter to show working times
- Easy maintenance
- **Visible** working status
- There is contacts and alarm is installed in case of trouble.
- Higher capacity of condensed water
- A heater for antifreezing is available (OPTION)
- **RS-485 communication** is available. (OPTION)

OPERATING & FEATURE



1) OPEN : Condensed water is flowed into the trap through INLET and reach the Low level ②, then float switch start to work and the motorised valve ③ is opened by electric signal and condensed water is discharged.

2) CLOSE : Condensed water is discharged through the motorised valve ③ and the water level get lower.

Even though the float switch ② reach the original position, the valve is still opened during sometimes as per set-up inside and will be closed after set-up times.

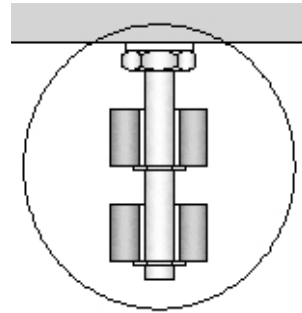
(Set-up times will vary for model and all have no loss of compressed air.)

WRET-1500, 3000 FUNCTION

FLOAT Sensor

Double float sensor improve the reliability.

Especially compressor oil make a goodsensor.



No Loss of Compressed Air

Built-in Off Delay Timer make no loss of compressed air

and the timer is set already in releasig and adjustable anytime.



Automatic Discharge Function in case of emergency

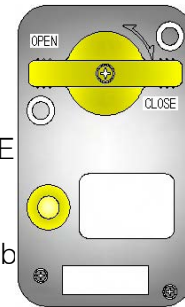
If the condensed water cannot be discharged, the alarm is activated (counter & alarm lamp flashed) by double float sensor and water is discharged all by the opening valve signal, then all the system return automatically.

(If the above situation is repeated continually, the system need check)

Visible Discharging Status

You can see the level of condensed water by transparency FRP TUBE and can check the working status by manual handle of electric valve.

Push the button and turn the handle, manual operation can be available.



Check Discharging Capacity of Condensed Water (Check Working Times)

Accumulated working times are showed on a counter in Display panel

DISPLAY PANEL FUNCTION



- 1) POWER : Show the power on
- 2) VALVE : Show the valve working
- 3) ALARM : Show the trap is working abnormally as water reach float high level(4) (Need check).
- 4) COUNTER : Show the total working times of trap.
The counting less than 100 times is caused by test before release
- 5) TEST : Push "TEST" button, the valve is opened regardless of condensed water.

6) RS-485 communication is available (OPTION)

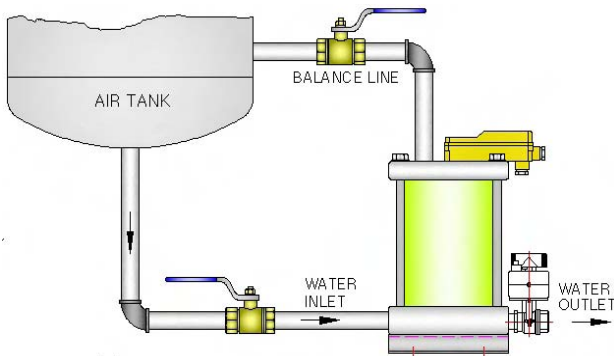
7) COUNTER In case of electric valve working : Show the valve opening time on second unit.(setting)

Power Drain Trap – Motorized Ball Valve

POWER DRAIN TRAP

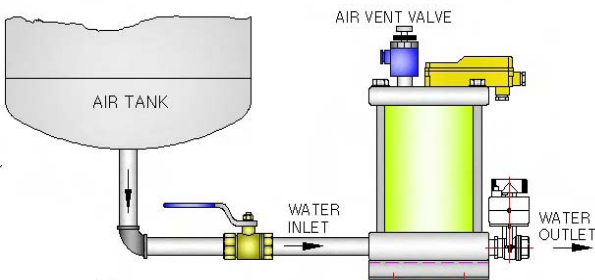
[WRET – 1500, 3000 INSTALLATION]

Installation 1]



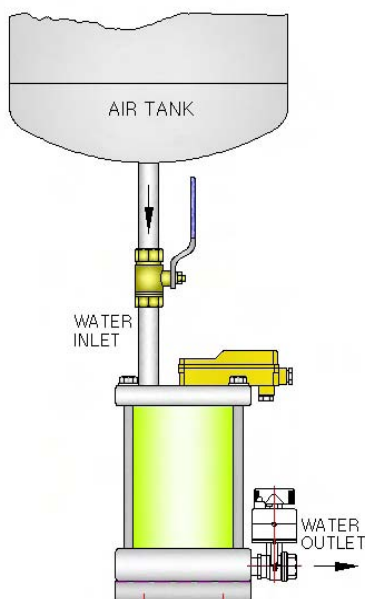
1. Connect inlet and outlet of condensed water pipe
2. Connect the balance line as the picture.
[The pipe of balance line should be over 15A]
3. Connecting should be separate for repairing.
4. Connect the power (be sure the power is on)
5. Installation 1] is the best connection.
6. Caution : Do not join the balance line to the middle of condensed water inlet line.

Installation 2]



1. Connect inlet and outlet of condensed water pipe
2. If the balance line is not connected, open the Speed Control v/v very slightly
3. Connect the power (be sure the power is on)
4. There is a loss of air in the case of Installation 2)

Installation 3]



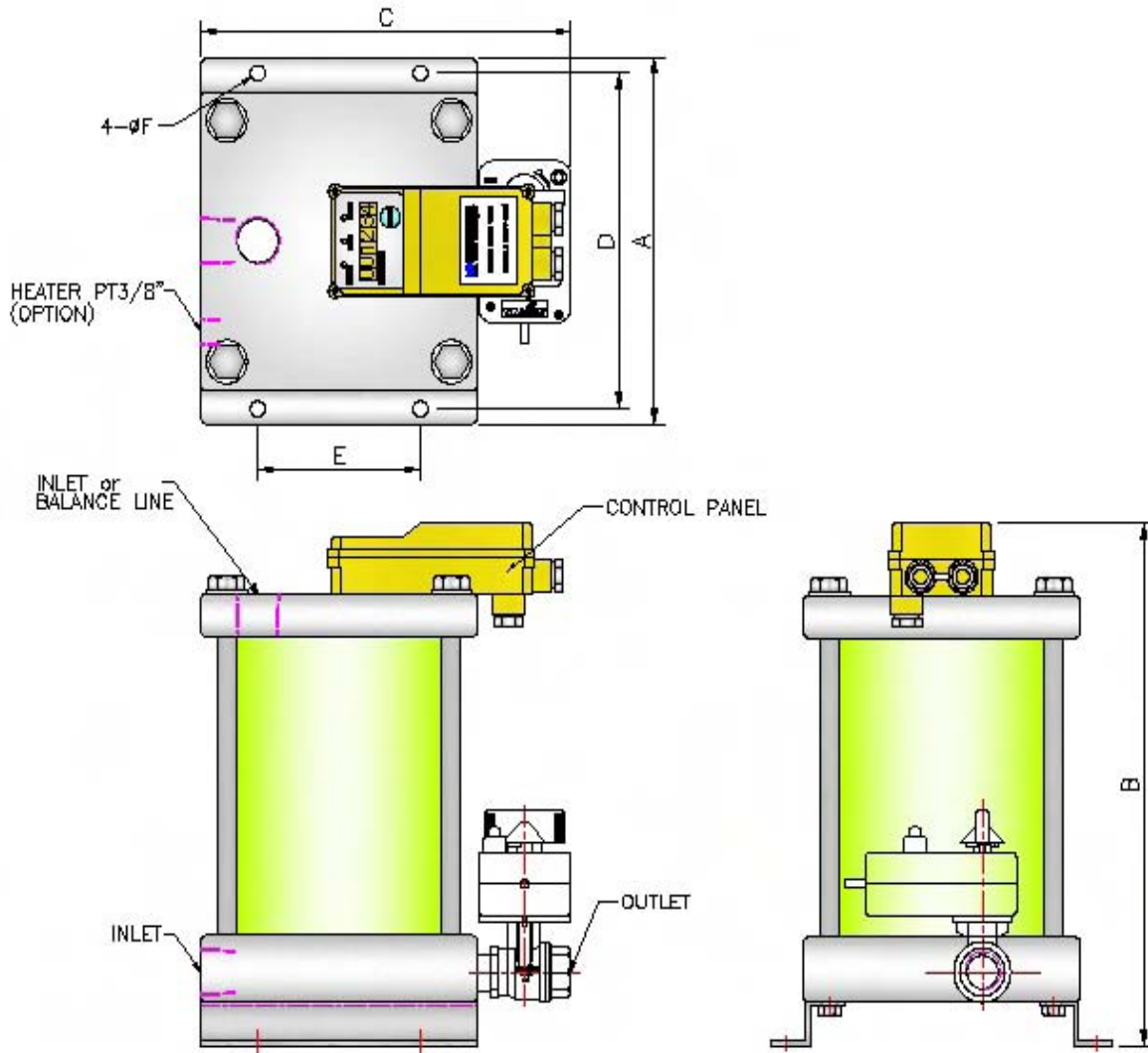
1. If the condensed water outlet is higher than the trap, use the balance line hole with the condensed water inlet.
2. Stop up the inlet at the bottom with plug or valve.
3. Connect the power (be sure the power is on)
4. Check the condensed water is flowed in.
5. Discharge the early condensed water manually.

** NOTICE

1. Be sure the compressed air is shut before installation.
2. Check the leakage of trap and pipe after installation.
3. Check the inflow to the trap.
4. Push test button and check how it works
5. Connecting should be separate for trap repairing.

WRET-1500, 3000 DIMENSIONS / SPEC.

1. FEATURE & SPECIFICATION



	SPECIFICATION			DIMENSION		
	WRET-1500	WRET-3000	Measure		WRET-1500	WRET-3000
Working Temperature	2 ~ 70		°C	A	158	210
Working Pressure	0 ~ 12.0		kgf/cm ²	B	241	299
Power	95~230V 1PH 60Hz			C	177	228
Unit Capacity	0.65	2.2	Liter	D	138	192
Maximum Capacity	400	1000	Liter/hr	E	94	100
AIR COMP.	1500	5000	HP	F	Φ11	Φ9
INLET	PT1/2" Up & Down	PT3/4" Up & Down	2 point			
OUTLET	PT 1/2"		Electric Ball Valve			
OPTION	HEATER, RS485 Communication					

** The reasonable capacity is one time working per 5~15 minutes.