

Power Drain Trap – Electric motorized type

TIMER CONTROLLED VALVE

[WRMT – Series]

FEATURE

- ⊙ All-copper gear design, high accuracy torque, especially for multi-channel scaling system.
- ⊙ Small size, compact structure, all stainless steel body.
- ⊙ Good sealing performance.
- ⊙ A variety of control methods.
- ⊙ High grade Waterproof(IP67)



SPECIFICATIONS

MODEL	IN/OUT	Working current	Max. torque	Environment temp.	Liquid temp.	The time for open/close
WRMT-15	1/2" (15A)	≤ 500 mA	2 Nm	-15 ~ 50 °C	2 ~ 75 °C	99hr 59min 59sec
WRMT-20	3/4" (20A)					
WRMT-25	1" (25A)					

WRMT(1) – 15(2) – 220(3) – 10(4)

(1) WRMT : Time controlled valve

(2) VALVE SIZE

15 : PT 1/2"(15A)

20 : PT 3/4"(20A)

25 : PT 1"(25A)

3) RATED VOLTAGE

110V~230V 1PH 50/60Hz

(4) 사용압력

10 : 0 ~ 10 kgf/cm²

20 : 0 ~ 20 kgf/cm²

(5) VALVE BODY MATERIAL

STAINLESS STEEL

Power Drain Trap – Electric motorized type

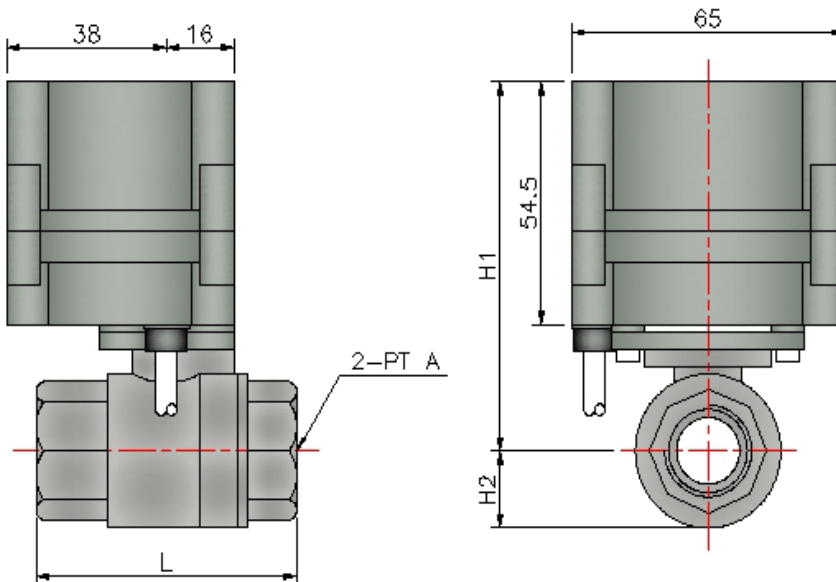
TIMER CONTROLLED VALVE

[WRMT – Series installation & dimension]

1. INSTALLATION

- ⊙ Be sure the compressed air is shot before installation.
- ⊙ Check the leakage of timer controlled valve and pipe after installation.
- ⊙ Check the inflow to the timer controlled valve
- ⊙ Connecting should be separate for valve repairing.
- ⊙ Set the timer after plug controller in.

2. DIMENSION



MODEL	A	L	H1	H2
WRMT-15	1/2"	62	83	17
WRMT-20	3/4"	72	87	20
WRMT-25	1"	81	95	24

3. SETTING OF TIMER

The open/close timer setting refer to operation manual.



<http://www.iwooritech.co.kr>

197, Jeongwangcheon-ro, Siheung-si

Gyeonggi-do, (DongWoo digital park A-416)

TEL : 031-496-0087 FAX : 031-496-0097